

We are pleased to
offer design services
in the following areas:

- *Residential*
- *Commercial*
- *Industrial*
- *Oilfield Services*
- *Marine/Coastal*
- *Roadways/Bridges*
- *Municipal*
- *Environmental*

MAINLINE DESIGN
Memorial University
of Newfoundland
P.O. Box 4200
St. John's
NL A1C 5S7

Phone: (709) 746-5359

Email:

newbury@engr.mun.ca

janice@engr.mun.ca

renee@engr.mun.ca

puddicom@engr.mun.ca

MAINLINE DESIGN

Structural Engineering
Firm



TOMORROW'S SOLUTIONS TODAY

MISSION STATEMENT

Mainline Design is committed to providing superior designs that are structurally-sound, economical, environmentally-friendly and aesthetically-pleasing by utilizing the latest building codes, design software and industry practices.

Our 4 design engineers have extensive experience and education from varying but complementary backgrounds to ensure that we can perform a design that suits your needs.

QUALITY OBJECTIVES

Mainline Design strives to maintain the highest quality of work in all the projects we do, and all of our members are committed to each portion of a project from beginning to end to be sure that all our clients' expectations are met and exceeded

Mainline always ensures that clients not only get a "great job", but find the results they really want.

SAFETY POLICY

Members of Mainline Design put safety above all else in the designs we do. If the design you are looking for can't be done safely, we will find a suitable safe alternative.

OUR STAFF

All of the members of Mainline are well-trained and highly-qualified professionals. We always put our clients #1 and strive to do the best job we can on any project, whether large or small.

The following sections are a brief overview of the education, skills and experience our staff has to offer. While our education and experience are similar in some accounts, each individual has their own unique touch to give to a project, adding towards a fully-developed, well-rounded finish on our projects.

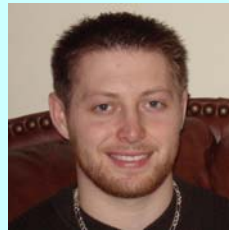
At Mainline, we examine each project careful to see who is best suited as lead for that particular project, but we all find a way to contribute to each and every job we do.

If there is some skill or training needed that you don't see listed, feel free to reach us through the contact information on the back of this brochure to discuss your project needs in more detail.



Janice Loveys

- Extensive Project Management experience in Building Construction
- Experienced in multi-phase Commercial Building Inspections and Quality Control Procedures
- Aptitude for analyzing Structural, Architectural, Civil, Mechanical and Electrical Plans
- Closed numerous Tenders ranging from \$100,000 to \$2.3 million
- Highly skilled at Cost Estimating
- Excellent knowledge of Testing Procedures for Concrete and Soils
- Proficient with STAAD Pro, AutoCAD, MS Word, Excel, and PowerPoint
- Familiar with Surveying equipment and procedures
- Excellent communication skills



Ryan Newbury

- Very Proficient in Structural Analysis & Design with wide variety of materials including Steel, Concrete, Masonry, Untreated and Preserved Wood, and their various combinations
- Very thorough knowledge of NBC 2005
- Experience in Residential, Commercial, Industrial, Oilfield Services and Marine Design, Inspection and Construction
- Very Efficient in Drafting using AutoCAD
- Proficient in Planning, Scheduling and Allocating Resources using MS Project
- Experienced in Data Analysis/ Representation and Quantities Tracking using MS Excel and Access Databases
- Possess broad experience in Leadership and Project Management
- Excellent Communication Skills



Renée Jerrett

- Very skilled in using STAAD Pro software for Structural Analysis & Design
- Highly competent in manual Structural Design calculations, especially Steel and Concrete Design and Finite Element Analysis
- Familiar with a broad range of software, including AutoCAD, ANSYS, and MS Word, MS Excel, Access, Outlook, and Powerpoint
- Currently furthering engineering education on Structural Building Systems
- Acquainted with Surveying Procedures and Equipment
- Well versed in Cost Estimating
- Wide variety of Structural Design/Construction work experience
- Excellent all around communication skills



Todd Puddicombe

- Excellent working knowledge of AutoCAD, ANSYS and STAAD Pro
- Extremely high quality of work – possess the ability to produce "stamp-ready" designs on first attempt with very few revisions
- Excellent experience in Design of Concrete Bridge Superstructures
- Very thorough knowledge of Canadian Highway Bridge Design Code CAN/CSA-S6-06
- Excellent aptitude for Concrete and Steel design
- Possess variety of practical experience, including working as an iron-worker on an 18000 sq.ft. warehouse
- Well-organized, quick-learning team player with an excellent work ethic