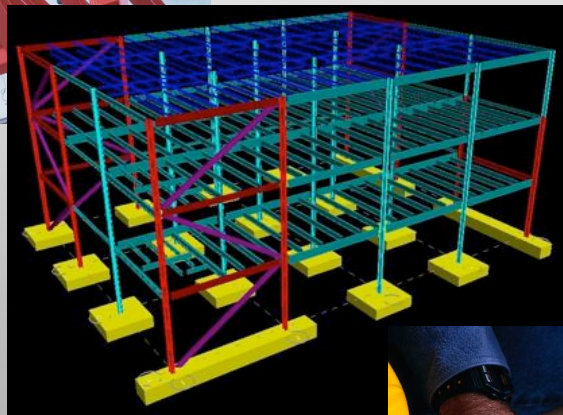
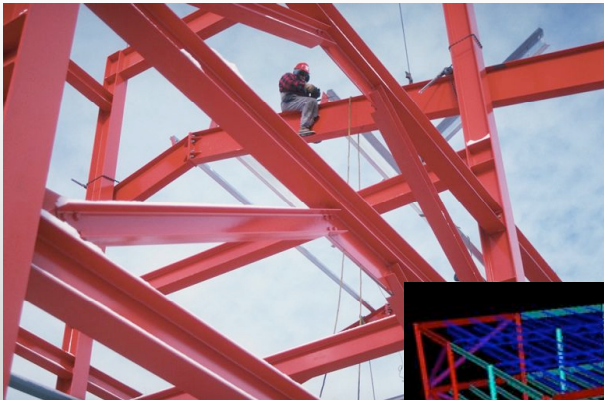




*See the light in your design*



Signal Engineering

[signalengineering.nl@gmail.com](mailto:signalengineering.nl@gmail.com)

(709)-690-1464

Memorial University of Newfoundland  
S.J. Carew Building; EN2050  
St. John's, NL  
A1B 3X5



## Our Mission

---

Signal Engineering aspires to be a world class engineering consulting company. We are committed to providing our clients with superior services consistent with high valued products and safety.

## Our Expertise

---



At Signal, we offer a wealth of practical and technical expertise in various facets of engineering. Our experience within the construction, oil and gas, land development and power generation industries, grants us a competitive advantage to tackle almost any civil engineering project. We have a profound knowledge of structural design and analysis on projects such as offshore platforms, low rise buildings, and bridges.

Signal Engineering has experience with various analysis programs such as ANSYS and RAM Structural System. We are capable of providing drafting services for an array of developments with AutoCAD, and we also have experience with Structural Design System 2.

## Our Philosophy

---



### **Visualize > *see the potential***

Our company is focused on seeing the potential in each project and understanding the overall objective of the work to be done. Organization and strong leadership enable us to see our goals and bring ideas to life.

### **Innovate > *design for the future, today***

We aim to exceed our client's expectations while developing innovative solutions to everyday problems. Our team is compiled of members with diverse credentials who will draw upon their previous experiences to create the highest quality deliverables.



### **Teamwork > *combining determination with ingenuity***

Along with our focused team, we collaborate with the client and industry professionals to achieve the desired vision. We strive to work harmoniously with our goals and expectations to finish work on-time and as planned.

### **Execute > *achieve through excellence***

Signal Engineering's core values are centered around teamwork and perseverance. When working with us, our clientele will see a highly motivated team. In all our projects, we take on and overcome the challenges with determination, commitment and planning. Upon project completion, our clients are satisfied with the execution of our service, as we will do everything possible to meet their needs.



## Jonathan Drummond: *Project Manager*



Jonathan Drummond is a senior civil engineering student studying at Memorial University. Though initially an English major, he decided to pursue a career in Engineering. Over his six work terms, Jonathan has developed skills and experience in a several areas including: Public Presentations, Economic and Technical Feasibility Studies, Business Development, Subsea Engineering, Technical Specification Generation, Wind Engineering, Project Commissioning, Project Scheduling and Construction Site Supervision. Jonathan's long term goals are to focus on project management and project/business development within the engineering industry.

Jonathan's project experience includes:

- Technical/Economic Feasibility study for 1500MW Labrador Wind farm including the delivery of a 1 hour presentation to an internal audience, for Nalcor Energy
- Technical documentation generation and offshore installation/supply vessel scheduling for Husky Energy's White Rose subsea system
- Supervision of construction crews on excavation and ramp building projects for NL Hydro

## Joan Furlong: *Client Communications*



Joan Furlong is an EIT completing her final year of civil engineering at Memorial University. With two years of work experience in structural design, municipal design, and material testing she possesses a diverse background in all facets of the engineering profession. Successful In various industries, Joan has been exposed to both the private and public sectors; businesses large and small. Applying her natural leadership skills to manage employees and timelines, she conducted site co-ordination, drawing management, and quality control. As a part of the Signal company Joan contributes knowledge of such computer programs as AutoCAD, LDD, and Canbas. Joan's future will incorporate her passion for environmental issues through a concentration on green building, LEED certification, and renewable energies.

Joan's project experience includes:

- Design and drafting of various land developments throughout Alberta including storm pipe design, road design, and grading schemes.
- Bridge design, tendering, and hydrology studies for the Department of Transportation and Works.
- On site quality control of material testing for the Anthony Henday Highway construction in Edmonton, Alberta.
- Site co-ordinator of monorail inspections for the Iron Ore Company of Canada.
- Drawing management, document preparation, and structural design with AMEC power and process division.

## Andrew Pope: *Research and Development*



Andrew is a senior civil engineering student studying at Memorial University. Through his six work terms and eight academic terms, Andrew has developed a range of skills and experience in a variety of fields including structural design, architecture, analysis of steel, concrete and wooden structures, project management and construction planning. His love for the outdoors, structures and the ocean has driven his focus towards offshore engineering and structural design.

Andrew's project experience includes:

- Structural analysis of steel columns for Shell's Mars B - Tension Leg Platform project using Ansys 10.0
- Working for Group2 Architecture Engineering Ltd, including opportunities to work with the Structural and Architectural teams designing very diverse structures in steel, concrete and lumber. Particularly the design of a university, high school, college and a recreation centre.
- Expanding his project management skills while working with the Integrated Project Management Team for the Petro-Canada's 2006 Turnaround. Prior to this he completed four months of field experience in the Bull Arm Facility working with the construction and structural leads, designing and constructing a Living Accommodation module for the Terra Nova FPSO

## Mike Corcoran: *Analysis*



Mike is a senior civil engineering student who is interested in the field of structural design. He has a broad work background including involvement within the offshore oil and gas, oil sands and construction industries. Throughout his work term placements, Mike has had the opportunity to participate in the design of numerous offshore projects including the Sea Rose FPSO, Terra Nova Additional Living Quarters, and HESS Pony Project.

Mike's project experience entails:

- Preliminary design of low rise buildings using RAM Structural System
- Local finite element analysis of critical locations on offshore structures using ANSYS
- Proficiency in reading structural drawings and recreating them within AutoCAD and Structural Design System 2 (SDS/2)
- Steel connection check and pipe support calculations
- Maintaining weight reports for White Rose and Terra Nova Additional Living Quarters projects
- Geotechnical research for oil sands tailings management purposes



## Valerie Chisholm: *Documentation*



Valerie is a senior Civil Engineering student with a diverse background of both design and fabrication experience. Valerie's first career ambition was to venture into architecture, however she decided to venture into the structural side of design. Valerie's interests particularly lie in design and structural analysis of offshore structures, but they also expand into a passion for management of construction projects. Her attention to detail and her knowledge of using specifications and codes are an important addition to Signal's quest for quality work.

Valerie's project experience includes:

- Preparing bidding and tendering documents for a variety of construction projects worldwide.
- Ergonomic assessments of various government-owned buildings
- Structural analysis of Tension-Leg and SemiSubmersible platforms using Ansys 11.0, incorporating various static and dynamic loading patterns, particularly for Petrobras' Papa Terra TLP.
- Field engineering and project management for Canaport's LNG Plant in New Brunswick and the Terra Nova FPSO Turret Cover Plate project.